

For One Sheave Stand C1. (14' without sheaves) Required.

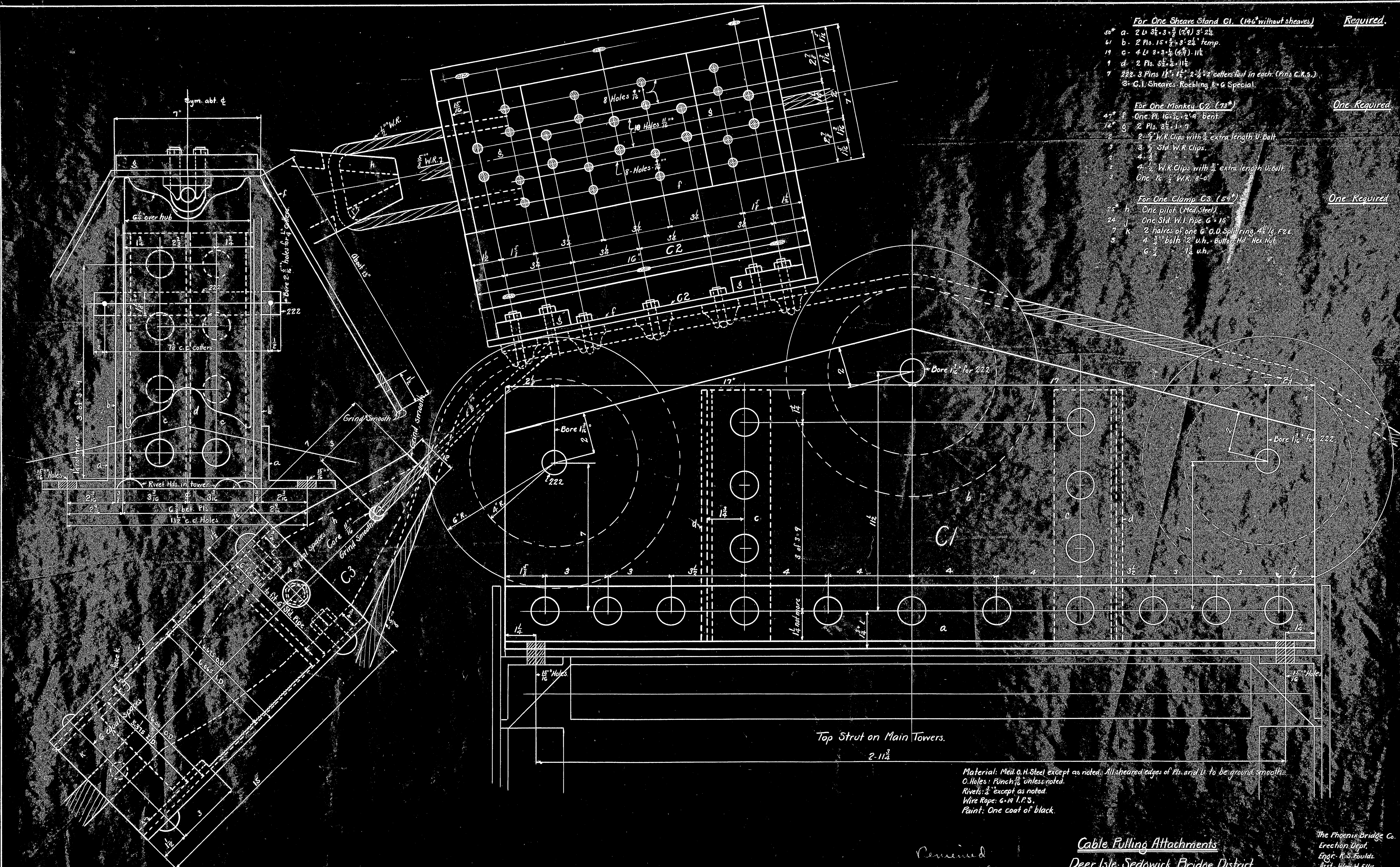
50" a. 2 Ls 3 1/2 x 3 1/2 (14') 3' 2 1/2"  
 41 b. 2 Pls. 15 x 3 x 3 1/2 temp.  
 19 c. 4 Ls 3 x 3 1/2 (47) 11 1/2"  
 1 d. 2 Pls. 3 1/2 x 11 1/2"  
 7 222. 3 Pins 1 1/2 x 1 1/2 x 2 1/2 collars put in each. (Pls. C.K.S.)  
 3- C.I. Sheaves Roebbing 8" G Special.

For One Monkey C2. (73") One Required

47" f. One Pl. 16 x 3 x 2' 4" bent  
 16" g. 2 Pls. 3 1/2 x 11 1/2"  
 12 2- 5/8" W.R. Clips with 1/2 extra length U. Bolt  
 3 3- 5/8" Std. W.R. Clips.  
 2 4- 5/8"  
 2 4- 5/8" W.R. Clips with 1/2 extra length U. Bolt  
 3 One R. 1/2 W.R. 8'-0"

For One Clamp C3. (54") One Required

25" h. One pilot (Med. Steel)  
 24" i. One Std. W.I. Pipe 6" x 15'  
 7 k. 2 halves of one 6" O.D. Splicing 4' L. F.Z.  
 3 4- 3/8" bolts 12" u.h. - bottom Hal. Hex Nut  
 6 2- 1 1/2 u.h.



Material: Med. A.H. Steel except as noted. All sheared edges of Pls. and U. to be ground smooth.  
 O. Holes: Punch 1/8" unless noted.  
 Rivets: 3/4" except as noted.  
 Wire Rope: 6-10 I.P.S.  
 Paint: One coat of black.

Revised  
 5 3 -38

Examined and approved:

Cable Pulling Attachments  
Deer Isle Sedgwick Bridge District  
Bridge over Eggemoggin Reach  
Hancock County, Maine.

The Phoenix Bridge Co.  
 Erection Dept.  
 Engr. R. S. Foulke  
 Asst. Wm. H. Ellis.  
 Scale: 1/2" = 12'  
 Date, March 12<sup>th</sup> 1938.

Supt. of Erection.

CO457x C1

